

Ann Gollifer: *A Sum of Days*



E D C R O S S

Ann Gollifer: *A Sum of Days*

Artist Statement

“I began this series of paintings in January 2022. I had 25 blank sheets of vintage watercolour paper, bound together in book form. They offered me a perfect ground for exploring Botswana ochre and the relationships between their colour ranges and textures. It was exciting to work on a more intimate scale. The bordered format of each painting resulted in an enclosed space, animated by the Botswana ochre watercolours and the energy of the life within my own garden.

I situated myself in the garden and listened, saw and felt the life it contained, down to the curiously beautiful patterns traced in the verandah tiles at my feet, organic, lacy, leaflike images drawn by geology and time, the dendrites. We live on the edge of town where the wild meets the cultivated. I enjoyed the idea that though there are borders to both garden and painting, life breaks in and out continually.

I have the privilege of having a beautiful outside space in which to work and play. It is a place where I can explore being, in relation to the other life forms that surround me. I use concentric lines of graphite, drawn on top of the ochre pigments that I have ground and processed into watercolour paint. The graphite lines are like the contours of a map. They signify a spatial location for all the images in the work. They also reference fingerprints and personal identities. The use of Botswana earth helps to embed me in the landscapes I create in paint, and gives me a sense of belonging in a place in which I have been self transplanted. The Frangipani is indigenous to South America, not Africa, but we have both flourished here, in this garden.

My collection of Botswana ochres is facilitated by Mma Motsei Nkwemabala, a traditional mural painter and healer. Mma Motsei has taken me to her collection sites and makes ochre cakes for her own use. Her village, Mochudi, is in South East Botswana. I can find ochres from further North and South at the city train station where there

is a traditional goods market. I buy 'Letsoku' from traders in ochre cosmetics. Letsoku is finely ground ochre in a wide range of colours from cream through yellow, orange, red, rich browns, pinks and purple. These powders are traditionally used as face powders to smooth, varnish and beautify skin.

There are no natural blue pigments found in Botswana. I have incorporated Cobalt blue into my palette to give me a range of greens and greys that complement the Botswana ochre range and offset the beauty of these colours."

Ann Gollifer (b. 1960 Guyana) has lived and worked in Gaborone, Botswana since 1985. A multidisciplinary artist, her own navigation of identity informs much of her work: she was born in a remote part of Guyana to British and Warao-Arawak parents, who travelled and worked widely during her childhood, and completed a Masters in History of Art at Edinburgh University (1983). An Artist member of the Thapong Visual Art Centre, Gaborone, Gollifer was part of the founding executive committee. Gollifer has exhibited in multiple group and solo shows across multiple countries, and her work has been collected by the British Museum, the National Museum of Botswana and the Triangle International Art Workshops amongst others. In South Africa she has worked with printmakers Mark Attwood and Joe Legate and has exhibited at CIRCA Johannesburg (2011) and Everard Read (2009). Solo shows include Guns & Rain (2020), and she has exhibited at 1-54, London (2021), Untitled Art, Miami (2020) and Investec Cape Town Art Fair (2019, 2020 and 2022). She has recently completed a long-term book-art project about her roots in Guyana. Gollifer is one of the finalists for the Sacatar Foundation residency award 2023, taking place in the Bahia state in Brazil.

With Maipelo Gabang, Ann Gollifer co-founded the Art Residency Centre, Gaborone, Botswana, and currently runs the centre with a group of young artist volunteers. She is represented by Guns and Rain, Johannesburg.



Ann Gollifer

Verreaux's, 2022

Botswana ochres, Titanium white gouache, ABColbat blue pigment and graphite on paper

41 x 56.5 cm

16 1/8 x 22 1/4 in

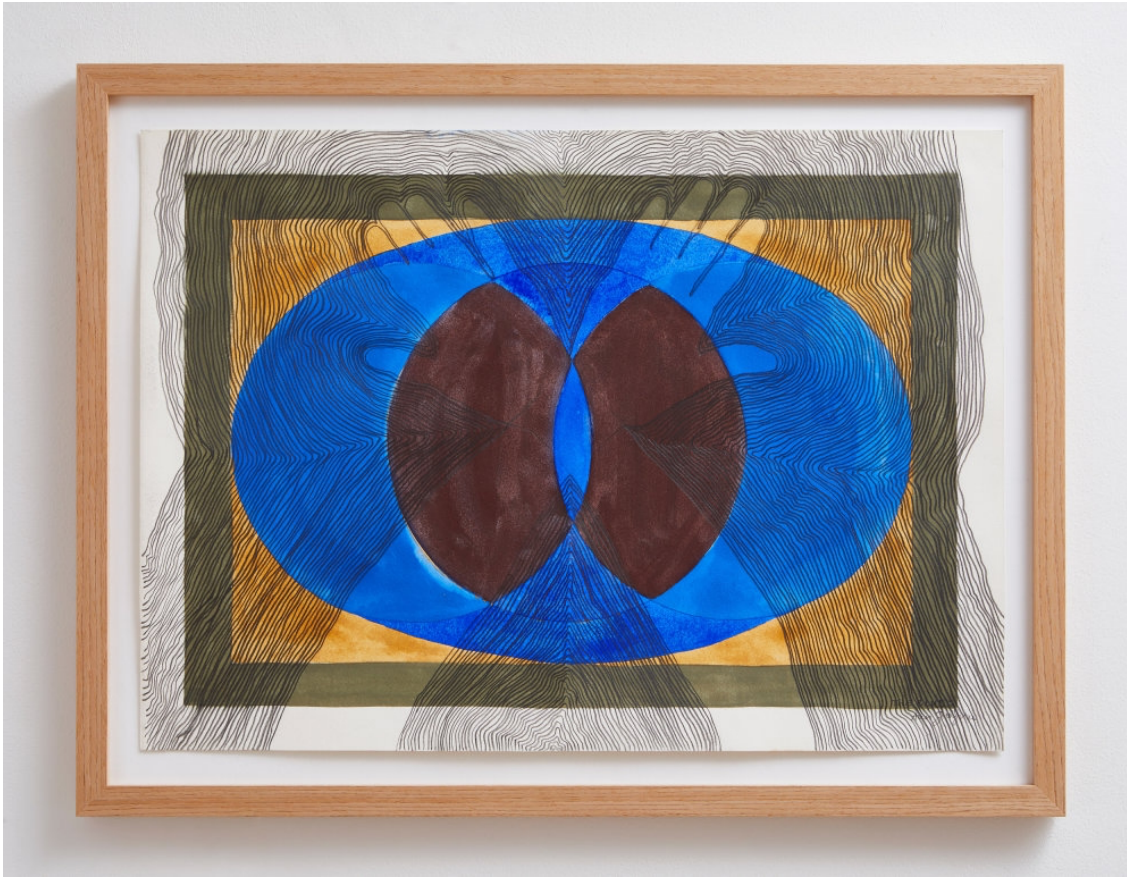
£ 2,000 + VAT

E D C R O S S

ed@edcrossfineart.com

edcrossfineart.com

+44 7507 067567



Ann Gollifer

The blues, 2022

Botswana ochres, Titanium white gouache, ABColbat blue pigment and graphite on paper

41 x 56.5 cm

16 1/8 x 22 1/4 in

£ 2,000 + VAT

E D C R O S S

ed@edcrossfineart.com

edcrossfineart.com

+44 7507 067567



Ann Gollifer

Talisman, 2022

Botswana ochres, Titanium white gouache, ABColbat blue pigment and graphite on paper

41 x 56.5 cm

16 1/8 x 22 1/4 in

Sold

E D C R O S S

ed@edcrossfineart.com

edcrossfineart.com

+44 7507 067567



Ann Gollifer

Regency, 2022

Botswana ochres, Titanium white gouache, ABColbat blue pigment and graphite on paper

41 x 56.5 cm

16 1/8 x 22 1/4 in

£ 2,000 + VAT

E D C R O S S

ed@edcrossfineart.com

edcrossfineart.com

+44 7507 067567



Ann Gollifer

Rezia, 2022

Botswana ochres, Titanium white gouache, ABColbat blue pigment and graphite on paper

41 x 56.5 cm

16 1/8 x 22 1/4 in

£ 2,000 + VAT

E D C R O S S

ed@edcrossfineart.com

edcrossfineart.com

+44 7507 067567



Ann Gollifer

Reflections, 2022

Botswana ochres, Titanium white gouache, ABColbat blue pigment and graphite on paper

41 x 56.5 cm

16 1/8 x 22 1/4 in

£ 2,000 + VAT

E D C R O S S

ed@edcrossfineart.com

edcrossfineart.com

+44 7507 067567



Ann Gollifer

Paradise, 2022

Botswana ochres, Titanium white gouache, ABColbat blue pigment and graphite on paper

41 x 56.5 cm

16 1/8 x 22 1/4 in

£ 2,000 + VAT

E D C R O S S

ed@edcrossfineart.com

edcrossfineart.com

+44 7507 067567



Ann Gollifer

Naja, 2022

Botswana ochres, Titanium white gouache, ABColbat blue pigment and graphite on paper

41 x 56.5 cm

16 1/8 x 22 1/4 in

£ 2,000 + VAT

E D C R O S S

ed@edcrossfineart.com

edcrossfineart.com

+44 7507 067567



Ann Gollifer

Mother's day, 2022

Botswana ochres, Titanium white gouache, ABColbat blue pigment and graphite on paper

41 x 56.5 cm

16 1/8 x 22 1/4 in

£ 2,000 + VAT

E D C R O S S

ed@edcrossfineart.com

edcrossfineart.com

+44 7507 067567



Ann Gollifer

Mrs Warao, 2022

Botswana ochres, Titanium white gouache, ABColbat blue pigment and graphite on paper

41 x 56.5 cm

16 1/8 x 22 1/4 in

£ 2,000 + VAT

E D C R O S S

ed@edcrossfineart.com

edcrossfineart.com

+44 7507 067567



Ann Gollifer

Miami, 2022

Botswana ochres, Titanium white gouache, ABColbat blue pigment and graphite on paper

41 x 56.5 cm

16 1/8 x 22 1/4 in

£ 2,000 + VAT

E D C R O S S

ed@edcrossfineart.com

edcrossfineart.com

+44 7507 067567



Ann Gollifer

Ko gae, 2022

Botswana ochres, Titanium white gouache, ABColbat blue pigment and graphite on paper

41 x 56.5 cm

16 1/8 x 22 1/4 in

£ 2,000 + VAT

E D C R O S S

ed@edcrossfineart.com

edcrossfineart.com

+44 7507 067567



Ann Gollifer

Ma, 2022

Botswana ochres, Titanium white gouache, ABColbat blue pigment and graphite on paper

41 x 56.5 cm

16 1/8 x 22 1/4 in

£ 2,000 + VAT

E D C R O S S

ed@edcrossfineart.com

edcrossfineart.com

+44 7507 067567



Ann Gollifer

Ka dinao, 2022

Botswana ochres, Titanium white gouache, ABColbat blue pigment and graphite on paper

41 x 56.5 cm

16 1/8 x 22 1/4 in

£ 2,000 + VAT

E D C R O S S

ed@edcrossfineart.com

edcrossfineart.com

+44 7507 067567



Ann Gollifer

Hoopoe, 2022

Botswana ochres on Arches paper 300gms

41 x 56.5 cm

16 1/8 x 22 1/4 in

£ 2,000 + VAT

E D C R O S S

ed@edcrossfineart.com

edcrossfineart.com

+44 7507 067567



Ann Gollifer

Guardian, 2022

Botswana ochres, Titanium white gouache, ABColbat blue pigment and graphite on paper

41 x 56.5 cm

16 1/8 x 22 1/4 in

£ 2,000 + VAT

E D C R O S S

ed@edcrossfineart.com

edcrossfineart.com

+44 7507 067567



Ann Gollifer

Frangipani, 2022

Botswana ochres, Titanium white gouache, ABColbat blue pigment and graphite on paper

41 x 56.5 cm

16 1/8 x 22 1/4 in

£ 2,000 + VAT

E D C R O S S

ed@edcrossfineart.com

edcrossfineart.com

+44 7507 067567



Ann Gollifer

Family, 2022

Botswana ochres, Titanium white gouache, ABColbat blue pigment and graphite on paper

41 x 56.5 cm

16 1/8 x 22 1/4 in

£ 2,000 + VAT

E D C R O S S

ed@edcrossfineart.com

edcrossfineart.com

+44 7507 067567



Ann Gollifer

Chacma #1, 2022

Botswana ochres, Titanium white gouache, ABColbat blue pigment and graphite on paper

41 x 56.5 cm

16 1/8 x 22 1/4 in

£ 2,000 + VAT

E D C R O S S

ed@edcrossfineart.com

edcrossfineart.com

+44 7507 067567



Ann Gollifer

Chameleon, 2022

Botswana ochres, Titanium white gouache, ABColbat blue pigment and graphite on paper

41 x 56.5 cm

16 1/8 x 22 1/4 in

£ 2,000 + VAT

E D C R O S S

ed@edcrossfineart.com

edcrossfineart.com

+44 7507 067567



Ann Gollifer

Dendrites, 2022

Botswana ochres, Titanium white gouache, ABColbat blue pigment and graphite on paper

41 x 56.5 cm

16 1/8 x 22 1/4 in

£ 2,000 + VAT

E D C R O S S

ed@edcrossfineart.com

edcrossfineart.com

+44 7507 067567



Ann Gollifer

Fall, 2022

Botswana ochres, Titanium white gouache, ABColbat blue pigment and graphite on paper

41 x 56.5 cm

16 1/8 x 22 1/4 in

£ 2,000 + VAT

E D C R O S S

ed@edcrossfineart.com

edcrossfineart.com

+44 7507 067567



Ann Gollifer

Chacma #2, 2022

Botswana ochres, Titanium white gouache, ABColbat blue pigment and graphite on paper

41 x 56.5 cm

16 1/8 x 22 1/4 in

Sold

E D C R O S S

ed@edcrossfineart.com

edcrossfineart.com

+44 7507 067567